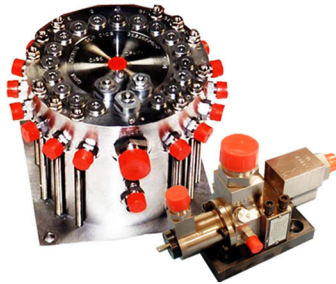
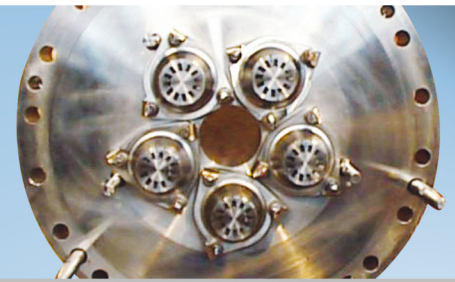


turbo power services

fuel system solutions



Turbo Power Services specialises in the repair and testing of all types of gas turbine control valves and their associated actuators for the following applications

Heavy Industrial Gas Turbines

- Gas fuel control valves
- Fuel oil control valves
- IGV control valve
- Compressor bleed valves
- Hydraulic Trip valves
- Fuel splitter / shear valves
- Temperature regulating valves lube oil/air
- False start drain valves
- Purge valves

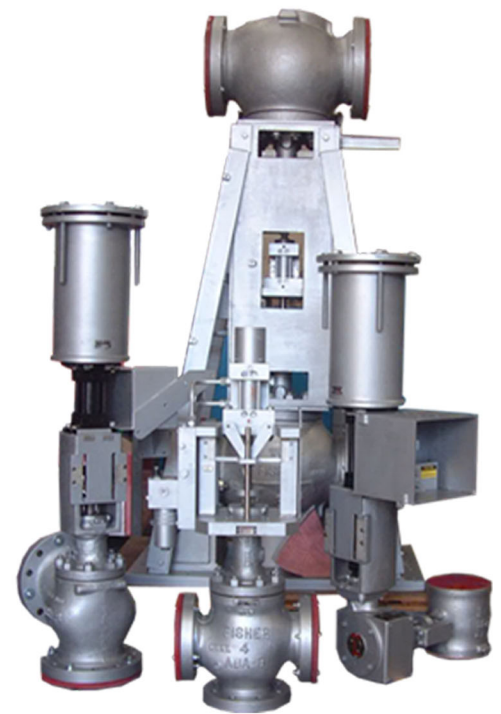
All valves are tested to our internal test procedures to ensure trouble free operation.

Valves are tested for the following (as applicable)

- Pressure test assembly
- Hydraulically flushed for fitting of electro-hydraulic valve
- Functionally/dynamically tested
- Stroke length
- Valve lift / reseal pressures
- Friction Tests
- Opening / closing times
- Seat leakage checks
- Conformance to specification
- Fail Safe operation check

We overhaul and repair control valves from the following manufacturers

- Young & Franklin
- Fisher
- Laurence
- Leslie Controls
- Robertshaw
- Saart



Control Valves

