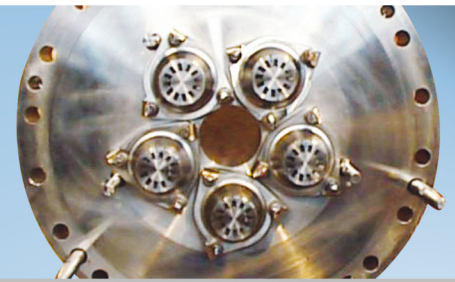
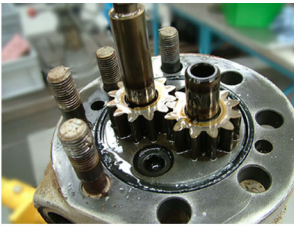


turbo power services

fuel system solutions



Linear & Radial Flow Dividers



Turbo Power Services are the European, Middle East and Africa authorised sales and repair centre for Roper Pumps USA, specialising in Gas Turbine flow dividers.

Our services are extended to include the following manufacturers of flow dividers

- Roper Pumps
- Scherzinger
- Shimadzu / Hitachi

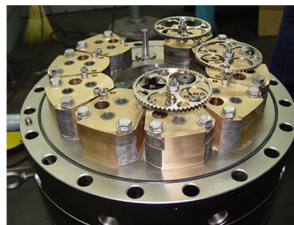


Gas Turbine Applications

Frame 3	W251	M701D
Frame 5	W501D5	M501F
Frame 6B, 6FA	W501F	M701F
Frame 7B, 7EA, 7FA	W501G	TG50D5
Frame 9E, 9F		TG20



Roper Authorised Distributor
 and Repair Center



TPS can offer supply of new, refurbishment or upgrade of your flow divider (model dependent) to the latest corrosion resistant "Duraflow" type for both linear and radial flow dividers

Key Features

- Stainless Steel Housing
- Bronze Cases
- Replaceable wearplates (bronze or other)
- Stainless Steel Internals (gears, bearings, shafts)
- All wetted surfaces are protected from corrosion
- 6 to 20 precision machined flow elements for equally metered fuel delivery
- With or without speed pickup sensors
- With or without starter motor
- Custom designed to operate in site specific conditions

