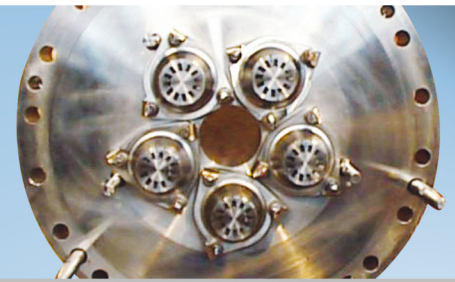
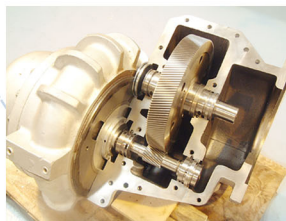
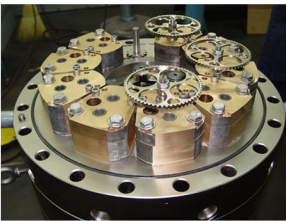


turbo power services

fuel system solutions



Frame 9E GT Components



Turbo Power Services can offer the supply, overhaul and testing for GE Frame 9E Gas turbine fuel system components from the following manufacturers

- Roper
- Young & Franklin
- Fisher
- Laurence
- Leslie Controls
- Warren

We offer services on the following components

- Fuel Nozzles
- Flow Dividers
- Fuel Pumps
- Fuel control valves
- Compressor Bleed Valves

302A1537P006	AA COMPRESSOR
91011722G02	STOP VALVE, FUEL OIL
298A7644P005	FUEL PUMP
91450326P002	MAGNETIC CLUTCH
268A1847P001	FO BYPASS VALVE
91405964P004	FLOW DIVIDER
255A4806P001	HYDRAULIC PUMP
91230099G08	AUX HYDRAULIC OIL PUMP
114A8218P034	SOLENOID TRIP VALVE
298A7661P003	BOOSTER COMPRESSOR
314A5266P001	FALSE START DRAIN VALVE
158A7585P065	THERMOSTATIC CONTROL VALVE
314A5099P001	GAS STOP RATIO VALVE (Fisher type V100)
314A5039P001	GAS CONTROL VALVE (Fisher type EABSPECD)